



Origen COLLECTION

# Origen

COLLECTION



PIEL S.A. - Avda. Del Cordell de Múrcia, 6 - 46890 AGULLENT - SPAIN  
+34 962 907 400  
www.piel.es

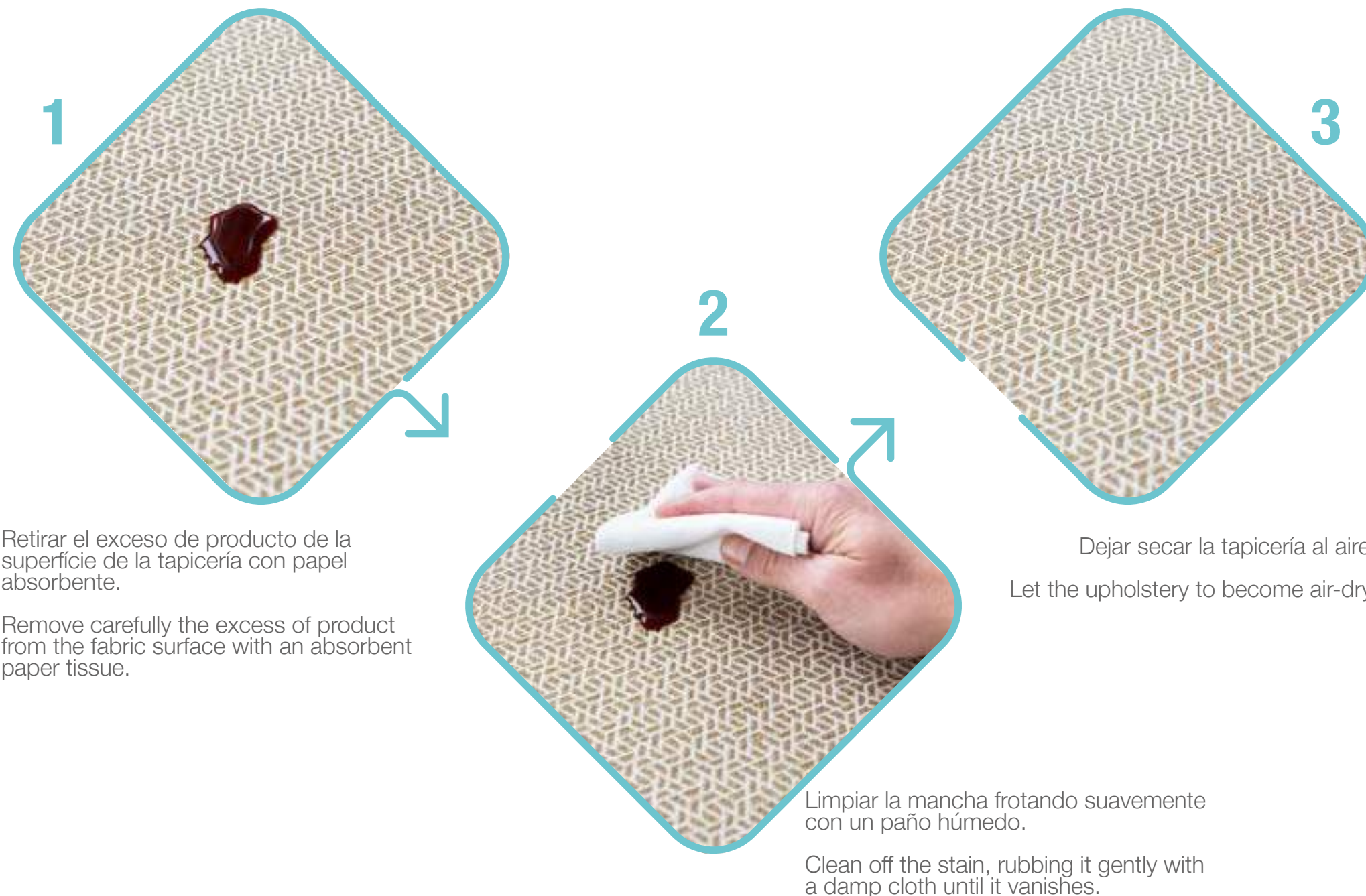




## Tecnología de fácil limpieza Technology for easy clean

Nuestro tratamiento Pielsa Clean protege el tejido frente a manchas de líquidos en solo tres sencillos pasos.

Our Fast Clean treatment allows you to keep your fabric in excellent condition following three simple steps.



Para mantener y cuidar el tejido frente a manchas grandes, persistentes o grasas, se recomienda lavarlo a máquina siguiendo las instrucciones.

In order to keep the fabric clean when facing big-sized, greasy or persistent stains, we recommend following the cleaning instructions detailed in the fabric technical datasheet.



Escanea este código QR para ver nuestros videos de limpieza con diferentes tipos de manchas.



Scan this QR code to watch our cleaning videos with different types of stains.



# Origen

COLLECTION

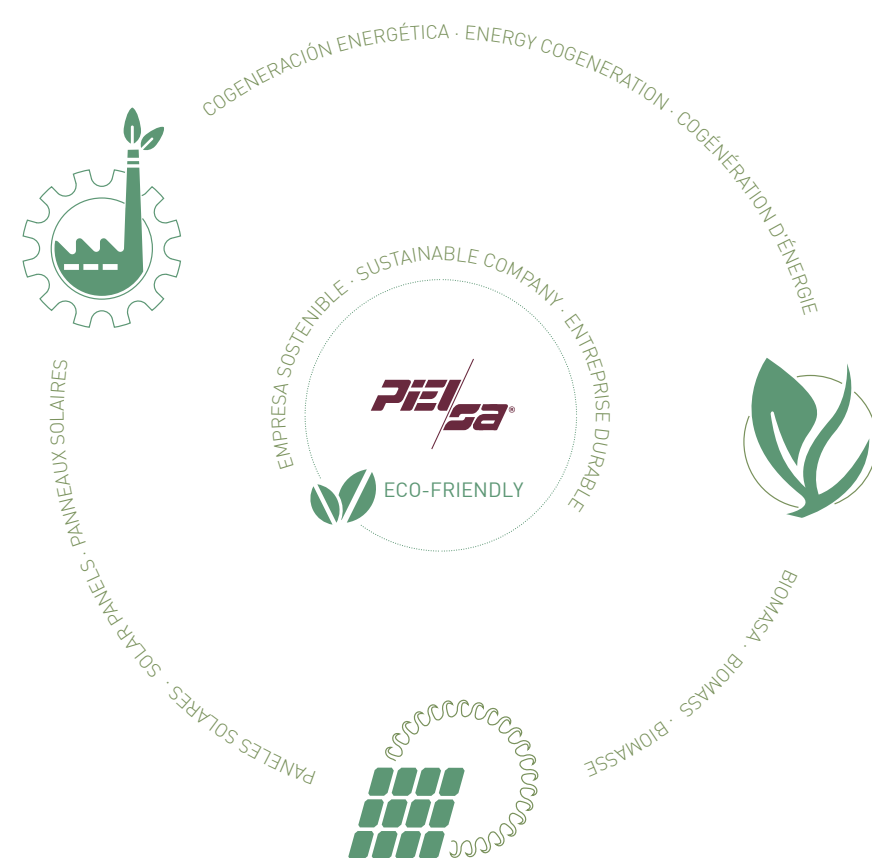
## Tejiendo por un mundo mejor

Piel SA, es una empresa comprometida con las personas, la calidad, el servicio y el planeta.



## Weaving for a better world

Piel SA, is a company committed to people, quality, service and the planet.



Piel SA, fundada en 1976, es una empresa textil con una área de producción de más de 70.000m<sup>2</sup>, certificada por SGS para la Norma de Calidad y Satisfacción del Cliente **ISO 9001: 2015**.

Piel SA, founded in 1976, is a textile company with 70.000m<sup>2</sup> production area, certified by SGS for the Quality and Customer Satisfaction Standard **ISO 9001:2015**.

Escanea este código QR para saber más sobre nosotros.

Scan this QR code to know more about us





TABLADO C/22



TABLADO C/50



JÁCENA C/20



ZAGUÁN C/50



SALMER C/50



BROCAL C/50



JÁCENA C/50



GIROLA C/50



GIROLA C/22



AQUA C/20



AQUA C/50





ZAGUÁN C/22



JÁCENA C/24



GIROLA C/12



JÁCENA C/22



GIROLA C/22



AQUA C/12



GIROLA C/20



SALMER C/22



AQUA C/22



BROCAL C/22



TABLADO C/12



TABLADO C/22



AQUA C/26



AQUA C/66



BROCAL C/66



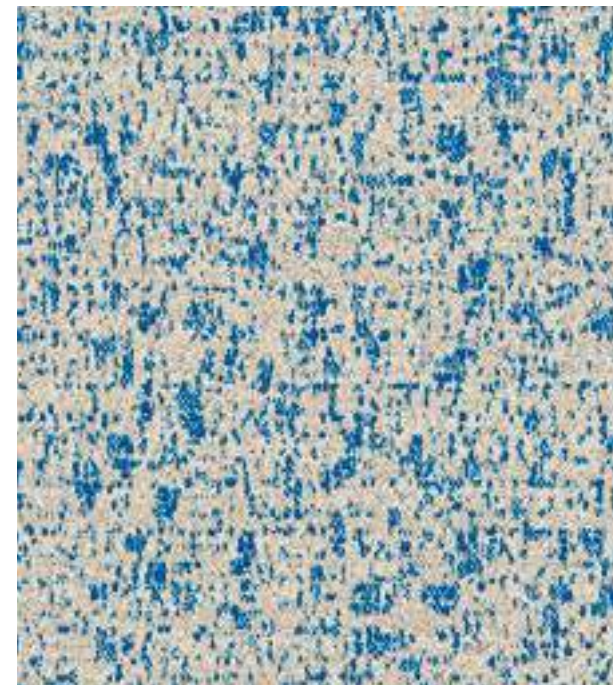
GIROLA C/66



GIROLA C/26



ZAGUÁN C/66



JÁCENA C/66



JÁCENA C/20



TABLADO C/66



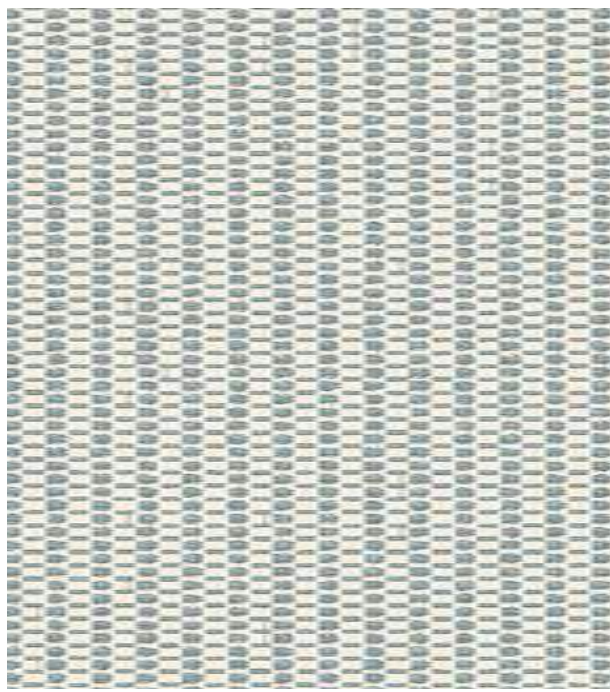
SALMER C/66



GIROLA C/58



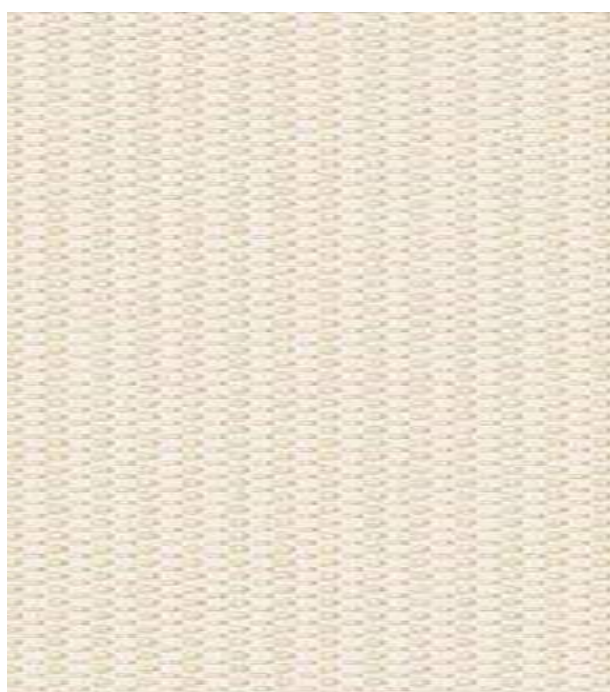
AQUA C/58



GIROLA C/65



AQUA C/65



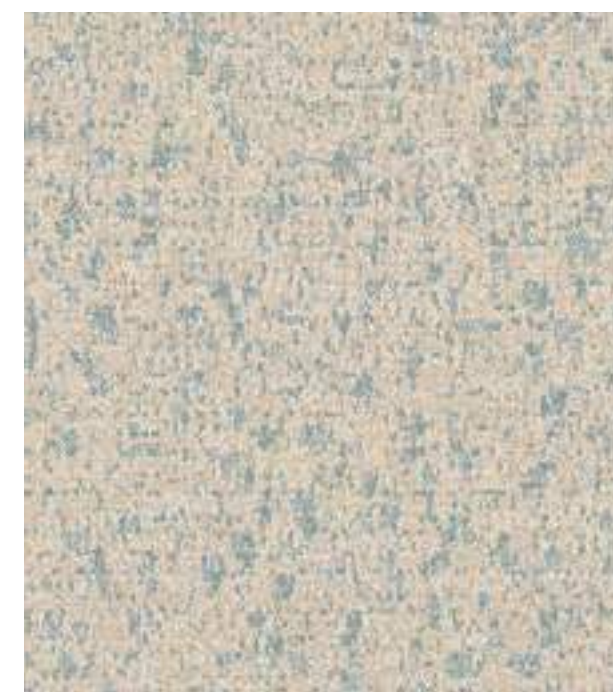
GIROLA C/26



TABLADO C/65



TABLADO C/58



JÁCENA C/65



ZAGUÁN C/65



SALMER C/65



BROCAL C/65



JÁCENA C/67



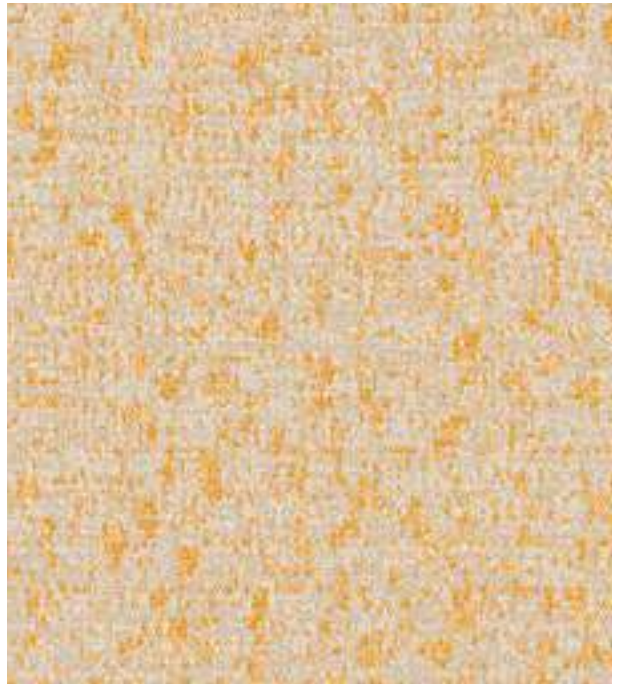
AQUA C/22



JÁCENA C/22



AQUA C/80



JÁCENA C/80



ZAGUÁN C/80



GIROLA C/20



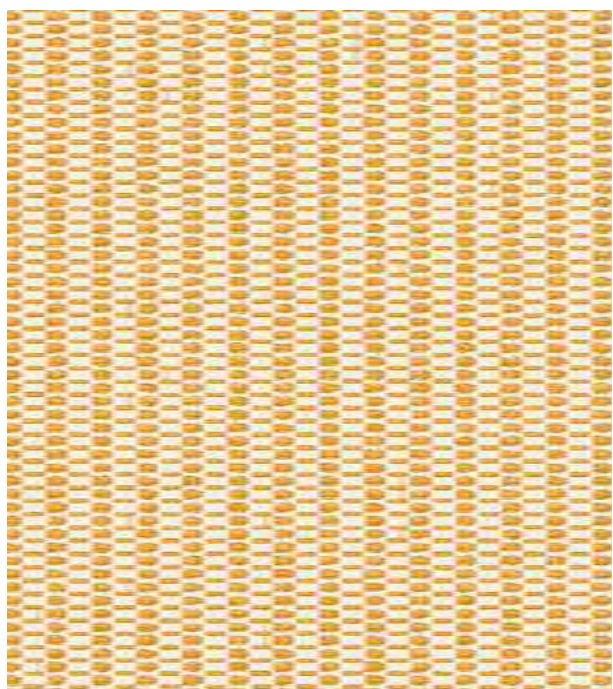
TABLADO C/80



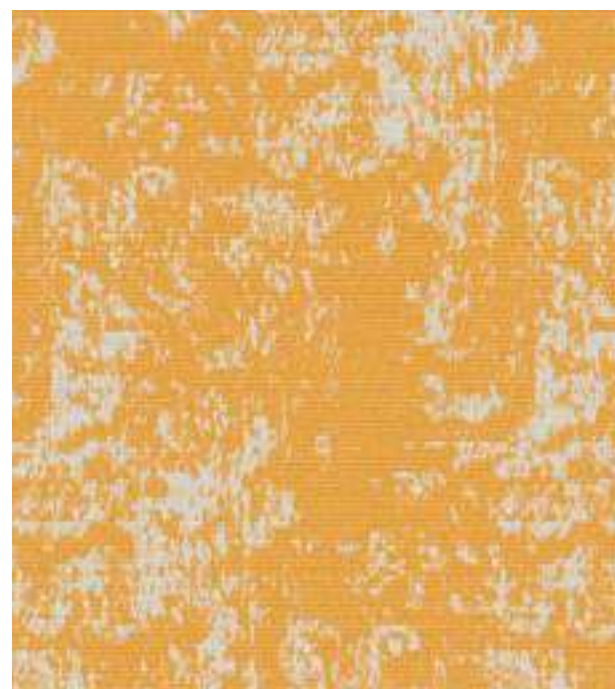
TABLADO C/22



JÁCENA C/20



GIROLA C/80



BROCAL C/80



SALMER C/80





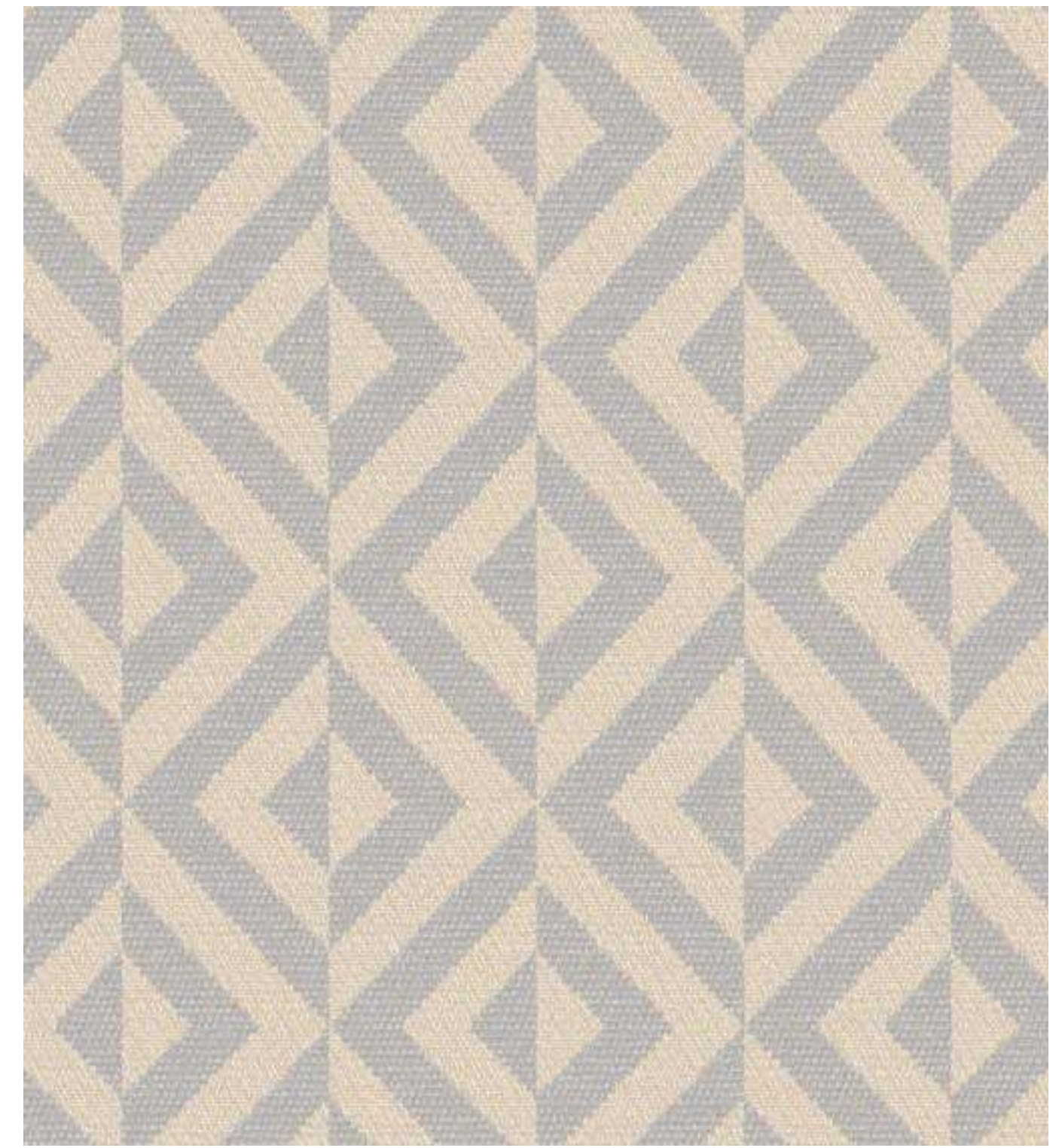
SALMER C/70



JÁCENA C/74



JÁCENA C/70



ZAGUÁN C/70



GIROLA C/74



GIROLA C/26



GIROLA C/70



BROCAL C/70



TABLADO C/74



TABLADO C/70



AQUA C/74



AQUA C/70



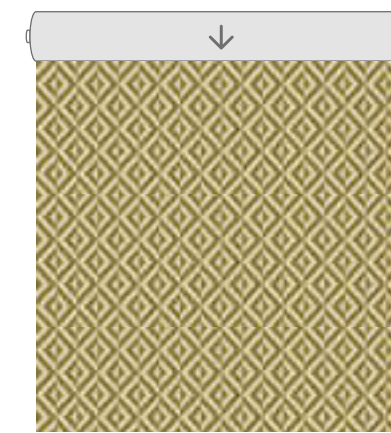
# Origen

COLLECTION



# Origen

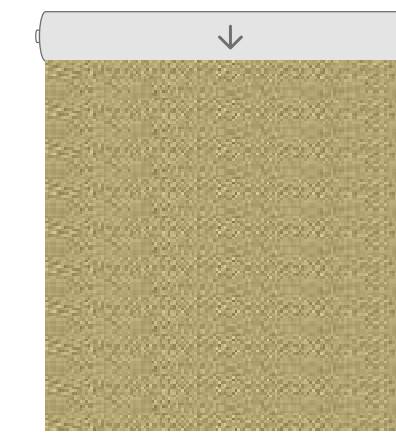
COLLECTION



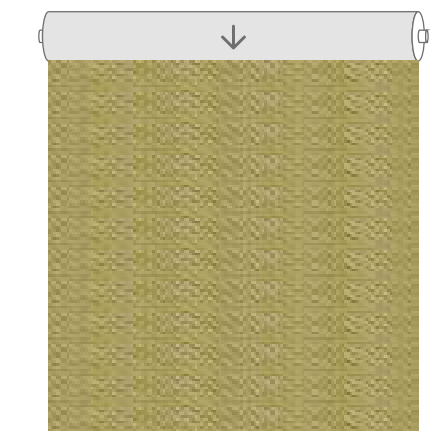
ZAGUÁN. Rapport 7,8x8 cm



BROCAL. Rapport 17,5x28 cm



SALMER. Rapport 7x7 cm

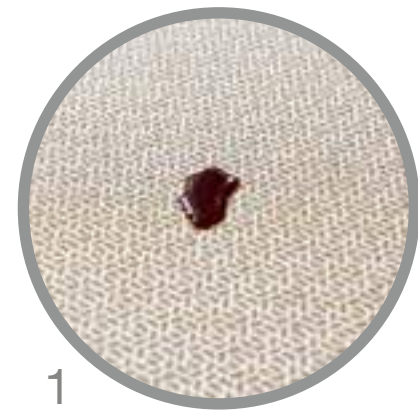


TABLADO. Rapport 3,5x2 cm

1. Retirar el exceso de producto de la tapicería.  
1. Remove excess product from upholstery.  
1. Enlever le produit excédentaire du tissu.

2. Limpiar la mancha con un paño húmedo.  
2. Clean stain with a damp cloth.  
2. Nettoyez la tache avec un chiffon humide.

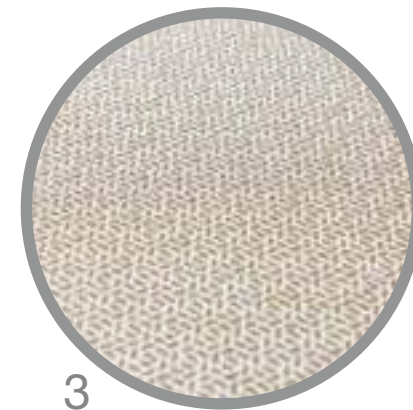
3. Dejar secar la tapicería al aire.  
3. Allow the upholstery to become air-dry.  
3. Laisser sécher le tissu dans l'air



1

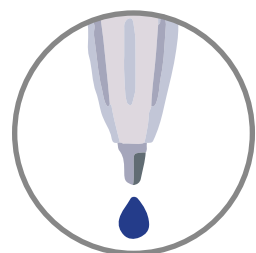


2



3

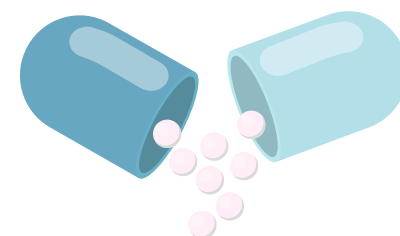
OTRAS POSIBILIDADES DE ACABADO BAJO CONSULTA  
OTHER FINISHINGS AVAILABLE UPON REQUEST



Stain release  
Antiboli



CO2Pure  
converts CO<sub>2</sub> - NO<sub>x</sub> - VOC'S into minerals



Encapsulated  
Fragrance, cosmetics,  
antistress, aloe vera



Biocides  
antibacterial,  
anti-dust mites,  
antivirus, antifungal

FR Not solid to wash  
UNE-EN13772/13773  
NF P 92-503/504/505



FR Solid to wash  
BS5852  
UNE-1021

CARACTERÍSTICAS TÉCNICAS TECHNICAL CHARACTERISTICS CARACTÉRISTIQUES TECHNIQUES

NOMBRE NAME NOM	ZAGUÁN	BROCAL	JÁCENA	GIROLA	AQUA	SALMER	TABLADO
COMPOSICIÓN COMPOSITION COMPOSITION	24%CO 32%PES 44%PAN	50%PES 50%PAN	37%CO 30%PES 33%PAN	56%PES 23%CO 21%PAN	13%LI 26%CO 30%VIS 31%PES	12%LI 26%CO 29%VIS 33%PES	12%LI 26%CO 29%VIS 33%PES
ANCHO (cm) WIDTH (cm) LARGEUR (cm)	140						
GRAMAJE (g/m <sup>2</sup> ) WEIGHT (g/m <sup>2</sup> ) GRAMMAGE (g/m <sup>2</sup> )	435	340	469	425	421	422	435
ABRASIÓN (ciclos) ABRASION TEST (cycles) TEST D'ABRASION (cycles)	40.000	40.000	40.000	40.000	30.000	40.000	40.000
PILLING PILLING PILLING	5	5	5	5	4	4-5	4-5
COSTURAS (u/t) SEAM STRENGTH (warp/weft) RES. DES COUTURES (c/t)	3,3/2	4/3	3,5/2	3,3/2	4,5/2	3,8/2,2	3,8/3,2
ACABADO FINISH FINITION	PELGA CLEAN						
INSTRUCCIONES LAVADO CLEANING INSTRUCTIONS INSTRUCTIONS DE LAVAGE							
APLICACIONES APPLICATIONS APPLICATIONS							

ABRASION TEST: UNE-EN ISO 12947-2 PILLING: UNE-EN ISO 12945-2 SEAM STRENGTH: UNE-EN ISO 13936-2

